



E & A CONSULTING GROUP, INC.

Engineering Answers

10909 Mill Valley Road, Suite 100 • Omaha, NE 68154-3950
P 402.895.4700 • F 402.895.3599
www.eacg.com

Dear Homeowner:

The SID has contracted concrete work to be done on the streets in your SID. A contractor will be on site to do work which includes removing the existing concrete that is damaged and replacing it with new pavement.

Throughout the course of this project, there could be some minimal damage done to yards and or sprinkler systems. The contractor that is on site will be responsible for replacing any damaged sprinkler lines and/or heads. They will also be replacing any sod that is torn up while on site. Once the new sod is laid, it will be the responsibility of the homeowner at each lot to water the new sod until it has re-established itself.

Before starting the work on site, each contractor must put in a call and have all the utilities in the area located. You might notice some areas in your yard that have been flagged and/or spray painted. This does not indicate the area in which they will be working. It is just to give them an idea of what kind of utilities are in the area that could possibly be hit while the contractor is on site working.

All work that is completed in public Right-of-Way and follow City of Omaha and Sarpy County specifications.

The work in your SID should not take longer than 30 days to complete. Please let me know if you have any questions or concerns on this at all.

Thank You,

A handwritten signature in black ink, appearing to read 'Eli Muehlich', written in a cursive style.

Eli Muehlich

Construction Administration Technician

Engineering Answers...to improve our communities

E & A Consulting Group, Inc.

10909 Mill Valley Road, Suite 100 • Omaha, NE 68154

402.895.4700 (o) • 480.334.0246 (m)

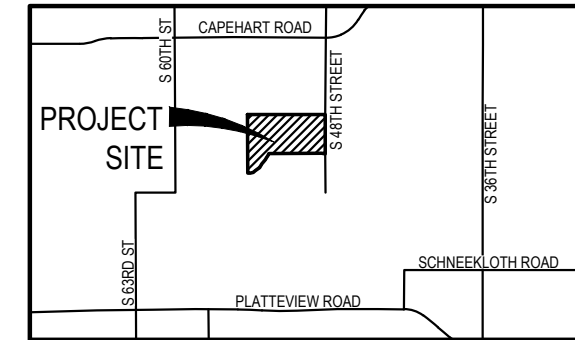
eacg.com



LIONS GATE

2023 STREET RECONSTRUCTION

SID NO. 323
SARPY COUNTY, NEBRASKA

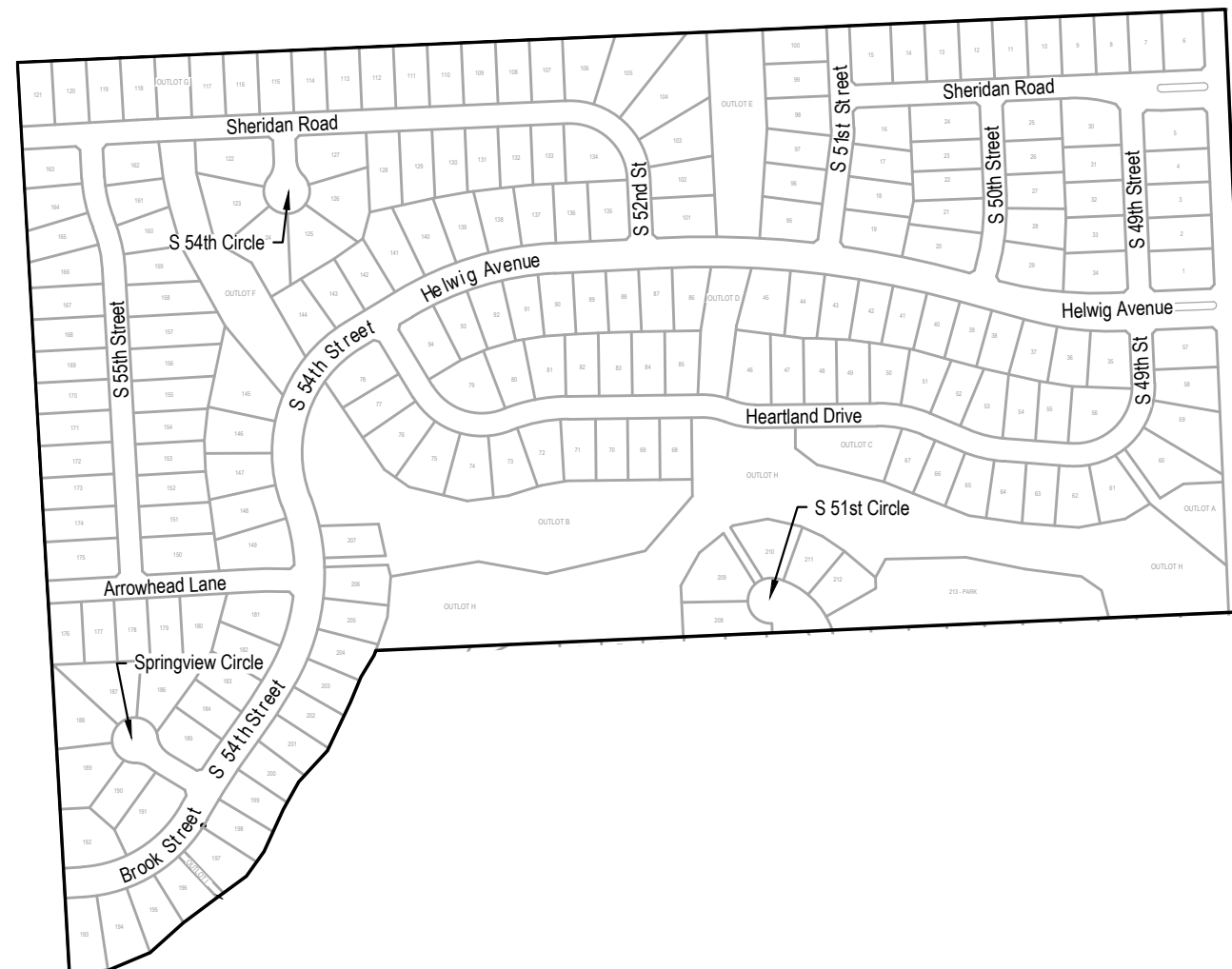


VICINITY MAP



APPROXIMATE BID QUANTITIES

ITEM	DESCRIPTION	QUANTITY	UNIT
1	CONCRETE PAVEMENT REPAIR, SMALL AREA	244	SY
2	FULL DEPTH SAW CUT EXISTING PAVEMENT	434	LF
3	REMOVE AND REPLACE 6" PCC TRAIL	384	SF
4	REMOVE AND REPLACE PCC SIDEWALK	617	SF
5	CONSTRUCT 6" PCC TRAIL	128	SF
6	CONSTRUCT 4" PCC SIDEWALK	100	SF
7	REMOVE PCC CURB RAMP	42	SF
8	CONSTRUCT PCC CURB RAMP	42	SF
9	CONSTRUCT DETECTABLE WARNING PANEL (1 location)	8	SF
10	REMOVE AND REPLACE FAULTY SUBGRADE	25	TN



INDEX OF SHEETS

SHEET NO.	DESCRIPTION
1	COVER
2	PLAN



APPLICANT
 SID # 323
 Dave Vogtman, Chairman
 11440 West Center Road, Ste. C
 Omaha, NE 68144
 P: 402.334.0700
 F: 402.334.0815
 larry@fdjlaw.com

DESIGNER
 E & A Consulting Group, Inc
 Teresa Wooten, P.E.
 10909 Mill Valley Road, Suite 100
 Omaha, NE 68154
 P: 402.895.4700
 F: 402.895.3599
 twooten@eacg.com

INSPECTOR
 E & A Consulting Group, Inc
 Randall L. Pierce, P.E.
 10909 Mill Valley Road, Suite 100
 Omaha, NE 68154
 P: 402.895.4700
 F: 402.895.3599
 rpierce@eacg.com

CONTRACTOR

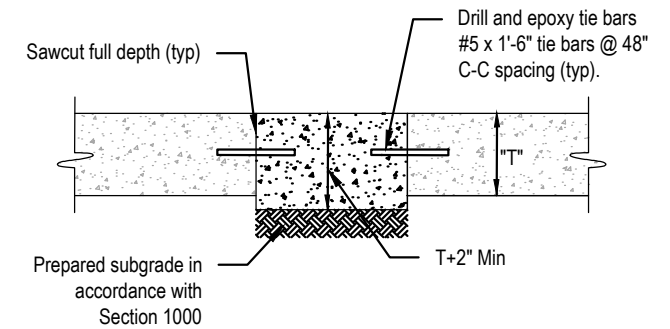
E & A CONSULTING GROUP, INC.
 Engineering • Planning • Environmental & Field Services
 10909 Mill Valley Road, Suite 100 • Omaha, NE 68154
 Phone: 402.895.4700 • Fax: 402.895.3599
 Website: www.eacg.com
 State of NE Certificate of Authorization #CA008

LIONS GATE 2023 STREET RECONSTRUCTION
 SID 323
 SARPY COUNTY, NEBRASKA

COVER

Revisions	Date	Description
1	8/1/2023	ISSUED FOR BIDDING

Proj No: P2016.384.006
 Date: 8/1/2023
 Designed By: TMM
 Drawn By: JME
 Scale: 1" = 40'
 Sheet: 1 of 2



SMALL AREA CONCRETE PAVEMENT REPAIR DETAIL
NOT TO SCALE

2023 STREET RECONSTRUCTION									
AREA NO.	NO. POURS	SAW CUT L.F.	CURB L.F.	WIDTH	X	LENGTH	LARGE AREA EST S.Y.	SMALL AREA EST S.Y.	NOTES
1	1	40	15	12.5	x	15.0		20.8	
2	1	28		4.0	x	20.0		8.9	Curb Inlet Throat
3	1	28		4.0	x	20.0		8.9	Curb Inlet Throat
4	1	40	15	12.5	x	15.0		20.8	
5	1	50	25	12.5	x	25.0		34.7	
6	1	55	30	12.5	x	30.0		41.7	
7	1	40	15	12.5	x	15.0		20.8	
8	1	40	15	12.5	x	15.0		20.8	
9	1	18		4.0	x	10.0		4.4	Curb Inlet Throat
10	1	40	15	12.5	x	15.0		20.8	
11	1	55	30	12.5	x	30.0		41.7	Coordinate Curb Ramp Location

2023 STREET RECONSTRUCTION					
AREA NO.	TYPE	APPROX. DIMEN.		EST S.F.	NOTES
A	Trail	8	x 16	128.0	CONSTRUCT (Match grade of existing utility vault)
B	Trail	8	x 32	256.0	REMOVE & REPLACE
C	Trail	8	x 16	128.0	REMOVE & REPLACE
D	Sidewalk	5	x 13	65.0	REMOVE & REPLACE
E	Sidewalk	5	x 40	200.0	REMOVE & REPLACE
F	Sidewalk	4.5	x 7	31.5	REMOVE & REPLACE
G	Sidewalk	5	x 25	125.0	REMOVE & REPLACE
H	Sidewalk	5	x 30	150.0	REMOVE & REPLACE
I	Sidewalk	5	x 9	45.0	REMOVE & REPLACE
J	Sidewalk	5	x 20	100.0	CONSTRUCT
K	Curb Ramp	6.5	x 6.5	42.3	REMOVE
L	Curb Ramp	6.5	x 6.5	42.3	CONSTRUCT - ADA Plate - Cast Iron



E & A CONSULTING GROUP, INC.
Engineering • Planning • Environmental & Field Services

**LIONS GATE
2023 STREET
RECONSTRUCTION**

PLAN

SID 323
SARPY COUNTY, NEBRASKA

8/1/2023 10:21 AM

K:\Projects\2016\384\p06\Engineering\CAD Files\Paving\Lions Gate 2023 Street Reconstruction-000.dwg

Jessica Brown